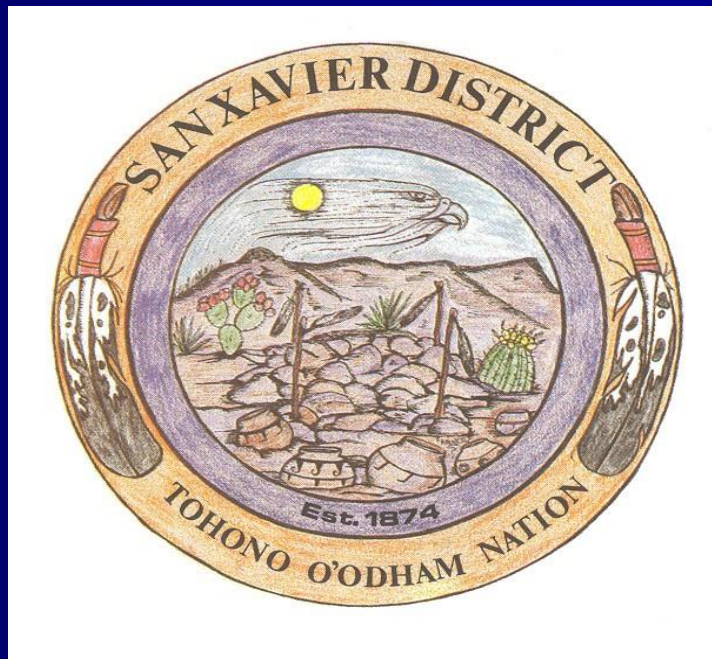


San Xavier District of the Tohono O'odham Nation





Tohono O'odham Nation Map

The 11 Districts of the Tohono O'odham Nation

- 
1. Boboquivari District
 2. HICKIWAN District
 3. Schuk Toak District
 4. Chukut Kuk District
 5. Pisinemo District
 6. Sells District
 7. Gu Achi District
 8. San Lucy District
 9. Sif Oidak District
 10. Gu Vo District
 11. San Xavier District

Tohono O'odham

- The San Xavier District of the Tohono O'odham, is one of four non-contiguous segments of the Tohono O'odham Nation
- The other three include
 - The main reservation containing 2,773,357 acres
 - San Lucy District, 10,409 acres
 - Florence Village, 20 acres, part of the Gu Achi District



Location of San Xavier

- San Xavier is located approximately twelve miles south of downtown Tucson, Arizona.
- Total of 73,000 acres of Sonoran Desert
- San Xavier District is one of eleven political subdivisions of the **Tohono O'odham Nation**



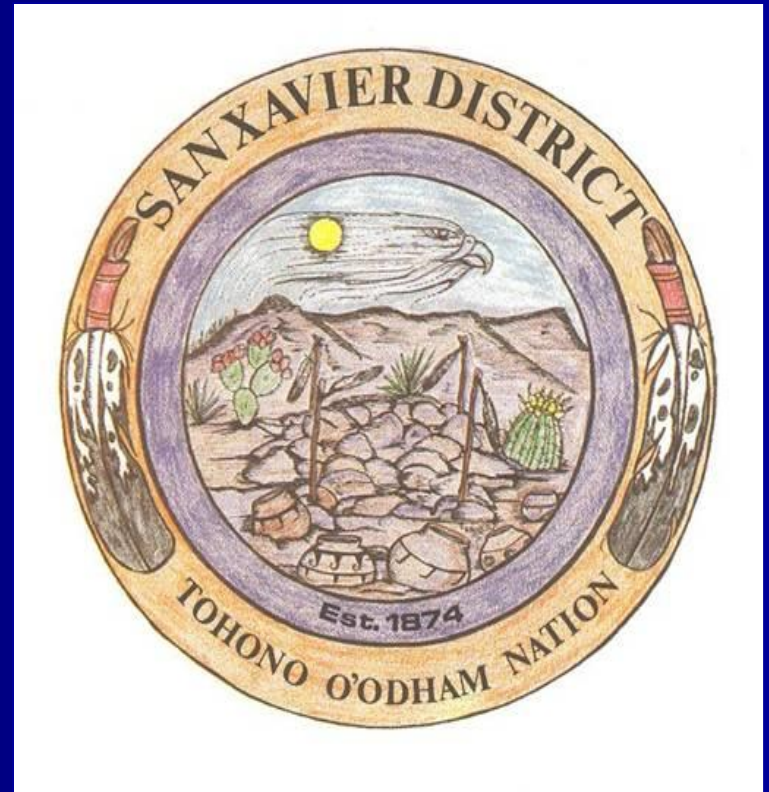
San Xavier District

- The San Xavier Reservation was established in 1874 by an executive order.
 - **Tohono O'odham ancestors** - the Hohokam have resided at this location since time immemorial.
- **The O'odham have historically** farmed lands of the Santa Cruz valley.
 - **O'odham were known as the "two-villagers"** because during the winter season they stayed at villages in the mountains near the springs and wells; in the summers they would migrate to the Santa Cruz River where they would farm.

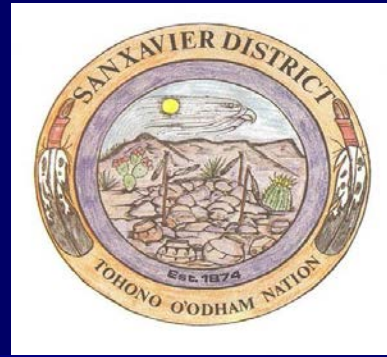


The San Xavier District Seal

- The seal was adopted by the San Xavier Community in August of 1992 and represents the San Xavier District
- The Four Staff represents the four directions, North, South, East and West
- The Pottery represents the strength of our culture - It will always be here, forever just like the pottery
- The eagle feathers represent the given strength one has achieved through prayer, as it is carried out by this messenger.
- The circle of gold (outer rim) signifies the lightness of the rising sun
- The circle of purple (inner rim around center mound) signifies the mountain and the elements given to us by our creator within our mother earth, which gives us life



San Xavier District Mission Statement

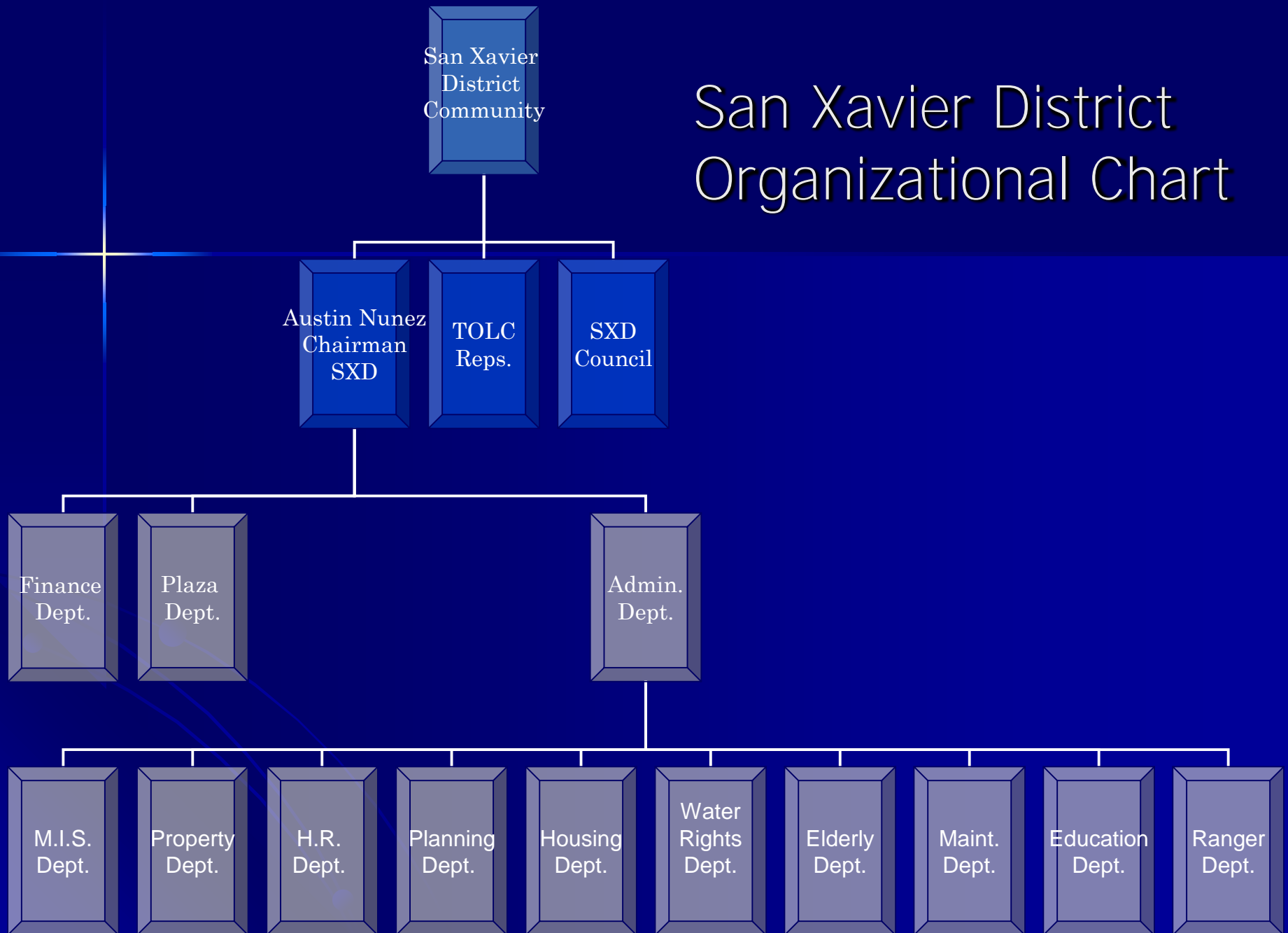


The mission of SXD is to promote self-determination and provide a legacy for future generations by guiding, leading, and supporting the community in the protection and preservation of the land, water, air, culture, traditions, knowledge, language, and vitality of the community

San Xavier District

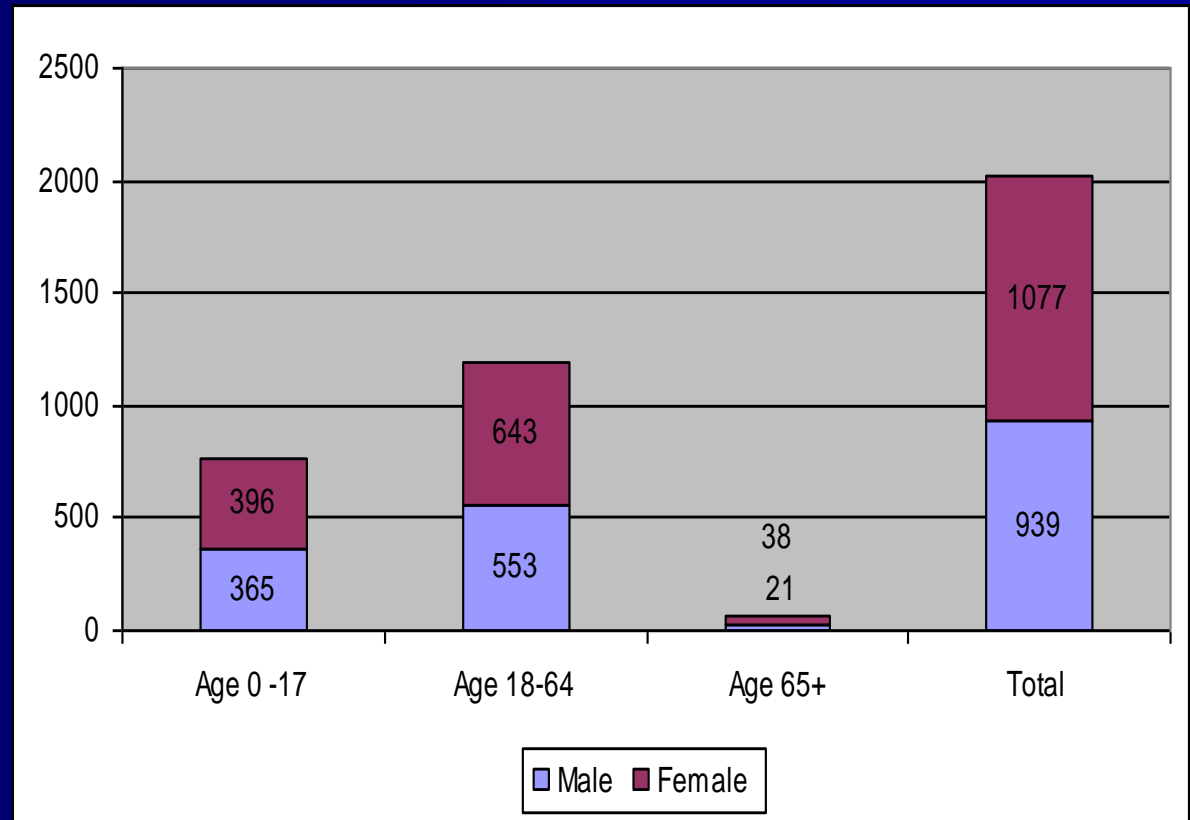
- SXD meets many societal need, including housing, education, environmental and cultural resource protection law enforcement, health, wellness and elder care.
- With fourteen departments there are many priorities, which can be divided in to four segments, land and natural resources, community and economic development, human resources, and governance.

San Xavier District Organizational Chart



San Xavier District Population

- The District's total population is about 2000. The majority of the population is 18-64 years of age. This group makes up 59% of the population.



Environment

- Sonoran Desert region, an arid environment
 - Diversity of plant and animal life including mesquite Bosque and Saguaro-Palo Verde communities.
- Santa Cruz River
 - Transects the eastern portion of the reservation and is normally dry except during the summer rainy months.
- Annual precipitation is approximately 11 inches.
 - The predominate natural feature is **S-cuk Du'ag (Black Mountain)**, a volcanic formation which rises to 3,062 feet along with several small associated formations, known as the Del Bac Hills, which include Martinez Hills and the Two Hills, also of volcanic origins.



Climate

- The Climate is mild in winter, with daytime temperatures averaging 50°-60°F (10°-20° C)
- Summer daytime temperatures reach well over 100° F (38° C), but the year round average is 88° F (31° C)
- The San Xavier /Tucson area is sunny 300 days of the year



Water Rights History

- 1975 U.S. v. Tucson water rights law suit
- 1982 Southern Arizona Water Rights Settlement Act (SAWRSA) was passed by congress and signed by President Regan
- 1986 new Tohono O'odham Constitution - Nation claims all natural resources and water
- 1991 San Xavier Allottees Association was formed
- 1993 Alvarez v. Tucson water rights lawsuit filed
- 1995 Interior Department Opinion says allottees own water rights.
- 2004 SAWRSA Amendments – signed by President Bush on December 10, 2004.

Water Rights

- Pumping by Tucson, Asarco, Farmers Investment Company and others - took San Xavier Water
- Mesquite Bosque & riparian habitat was destroyed
- Co-op Farm wells dried up in 1980's due to groundwater depletion
- In 1975 the United States Government filed a lawsuit on behalf of the Tohono O'odham against the city of Tucson, the State of AZ, several mining companies, Farmers Investment Company (FICO), and others pumping groundwater from the Santa Cruz Basin. The lawsuit, U.S. v. Tucson, claims that the San Xavier groundwater table has been lowered by the increase pumping of each of the named entities.

Water Rights

- 2006 signing ceremony took place for the Water Rights Settlement Agreement, in which the Nation will receive 50,000 acre-feet of Central Arizona Project Water each year, mainly for use in farming operations in SXD and Schuk Toak District.



Economics

- In 1968 the Indian Self-Determination Act (P.L. 93-638) was passed. Under this law tribes could petition to take over a service or program provided by a federal agency. Allowing the tribe to provide the program or service directly to its people rather than relying on a federal agency
- The 638 process increased revenue available to the TON and allowed Districts some additional autonomy
- **In the late 1980's the tribe began its Bingo enterprise, which further increased revenue.**
- The first Desert Diamond Casino was built and opened with 500 machines in 1993; the second Desert Diamond Casino follow in 2001.

Economics

- San Xavier Mission Plaza
 - Native American owned and operated Arts and businesses
 - Native American Jewelry, Arts and Crafts
 - Traditional foods



Economics

- San Xavier Business Park
 - Tenants include Empire Machinery, Arizona Storage Rentals, Willard Trucking, El Gorrion Lunch Truck, Marquez Funeral Consulting, the first Desert Diamond Casino and the San Xavier Development Authority.



San Xavier Del Bac

- The Mission San Xavier Del Bac is a 300 year old Spanish Mission **Church established in the 1700's** by Jesuit missionaries and explorer Eusebin Keno, with the current church building constructed by the Tohono O'odham and Franciscan priests from 1783 to 1797. It is one of many missions built in the southwest by the Spanish on their then-northern frontier. The Mission is also known as the White Dove of the Dessert.



Kitt Peak National Observatory

- Kitt Peak National Observatory is an internationally known astronomical observatory, located about 45 minutes west of the District on Highway 86.
- Sacred site for **Tohono O'odham**



Tohono O'odham Today

- Today, the Tohono O'odham Nation has a land base of 2.8 million acres, which is comparable to the size of the state of Connecticut
- Located in the southernmost part of Arizona, with seventy-five miles of the Nation running along the United States/Mexico International Border
- **The main Tohono O'odham reservation is the second largest Indian reservation in the United States (second to the Navajo Nation)**
- Current tribal enrollment (as of summer 2004) is 25,940; with **approximately 11,400 members of the Tohono O'odham Nation residing on the reservation; approximately 1,800 enrolled members living on traditional O'odham lands in Mexico; and** the rest of the enrolled members residing off the reservation and traditional lands.

Tohono O'odham Basketry

- The O'odham are very well known for their basket weaving.
- O'odham baskets were originally used as household wares, such as food containers, medicine and trinket holders, strainers for liquids, etc.
- Baskets have progressed to an art, where weavers can express themselves in various patterns and designs.
- Baskets were made by women, but today many are men have taken up the art.



Man in the Maze

- This symbol is very meaningful to the **Tohono O'odham**. Also known as the maze of life. The maze represents the difficult journey toward finding deeper meaning in life. The twists and turns refer to struggles and lessons learned along the way.





Questions?